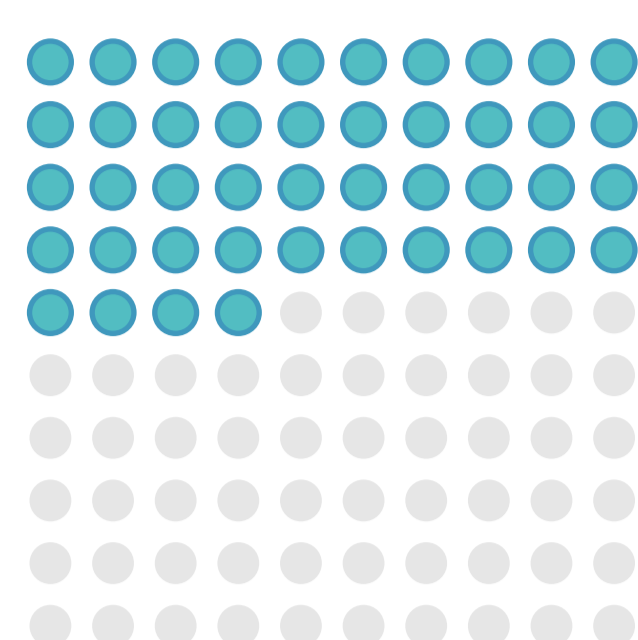
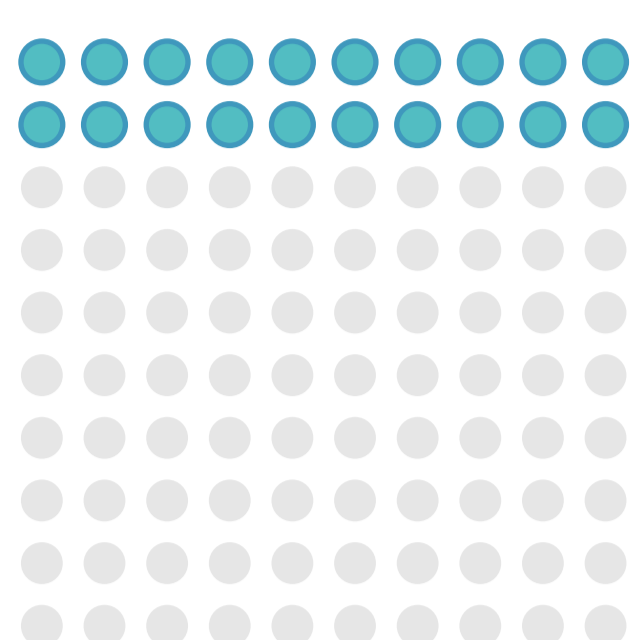
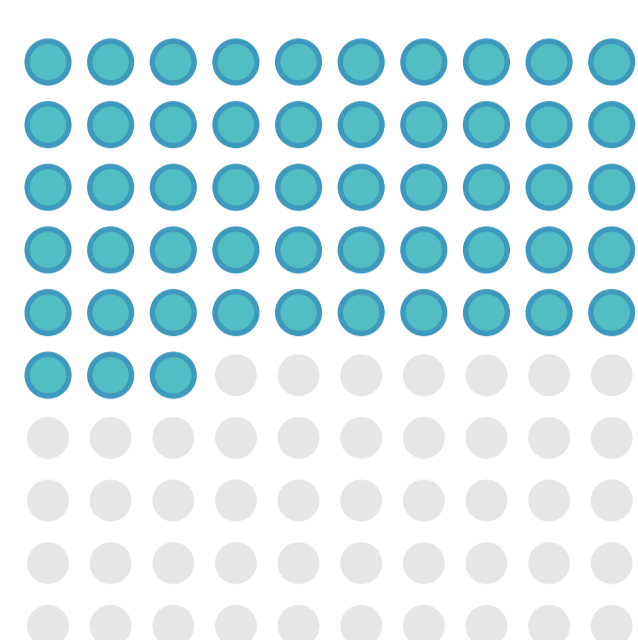


# ARTIFICIAL INTELLIGENCE (AI)

Positive attitude, but underestimation of applications used in

## KNOWLEDGE AND USE OF AI

A technology people use without realizing it



**53%**  
KNOW WHAT **ARTIFICIAL INTELLIGENCE** INVOLVES

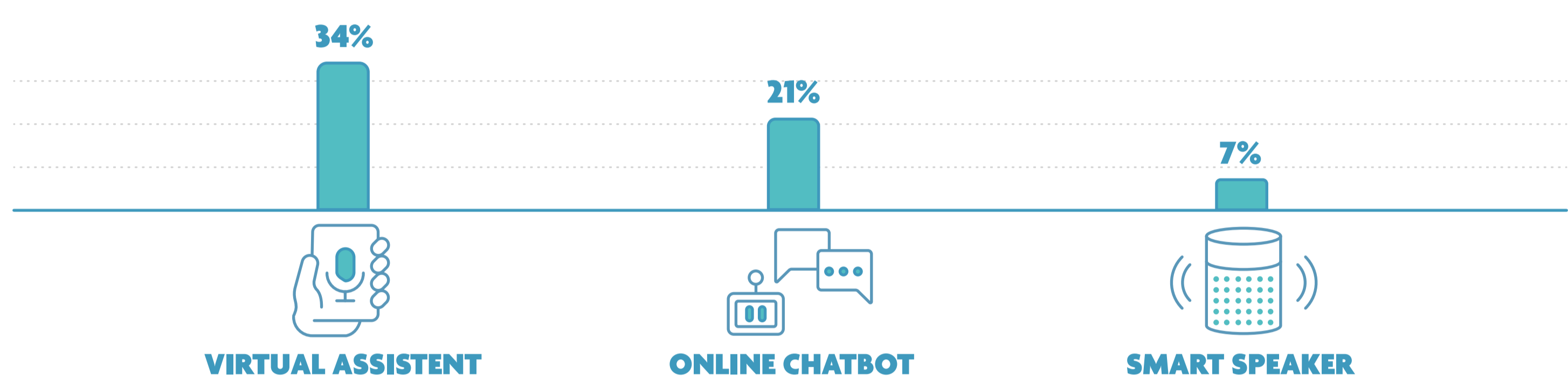
**20%**  
SAY THEY HAVE **USED AI** AT SOME POINT

OPPOSITE

**44%**  
HAVE USED AN APPLICATION IN THE PAST YEAR FOR WHICH AI IS CENTRAL

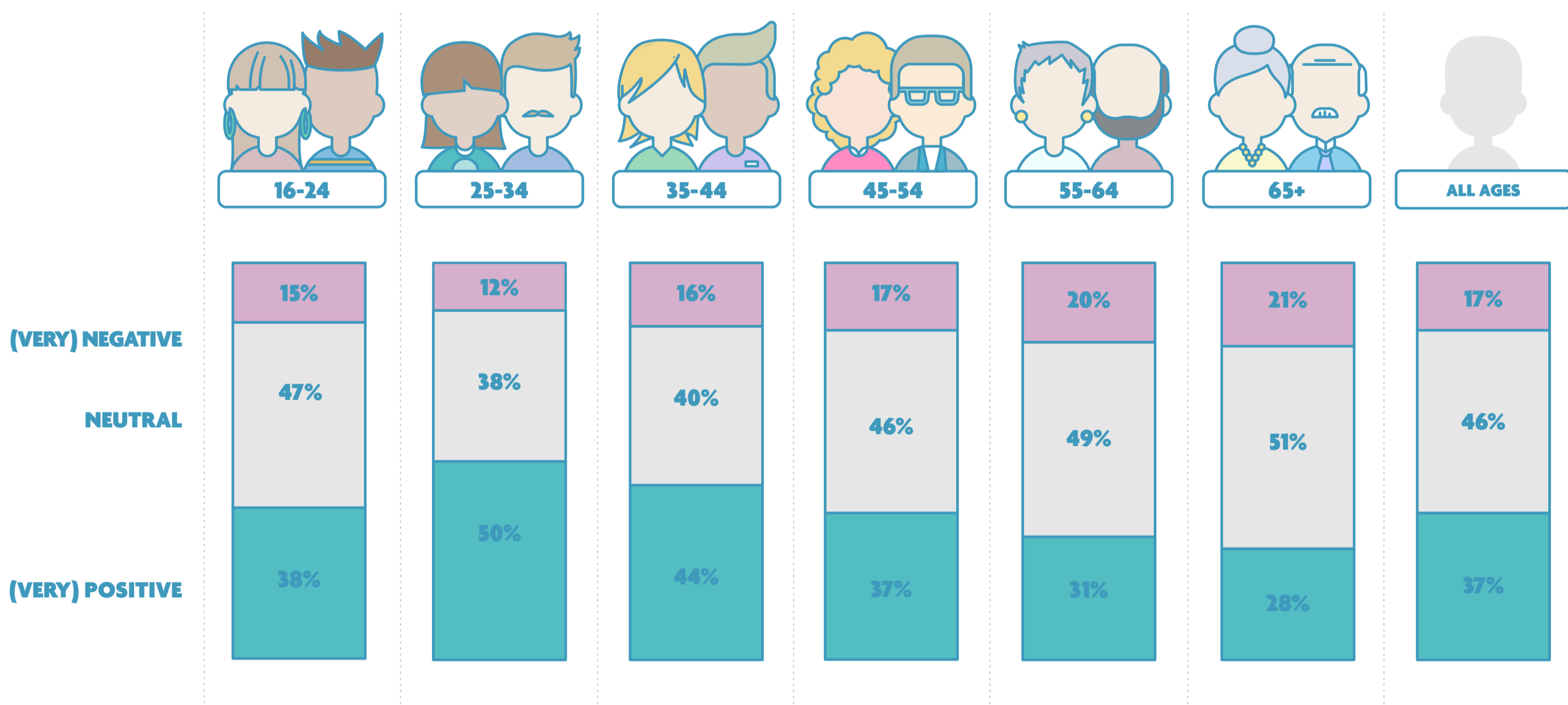
**24%**  
USE AI WITHOUT REALIZING IT

### Most common use of artificial intelligence



## ATTITUDE TO ARTIFICIAL INTELLIGENCE

What do Flemings think about AI?

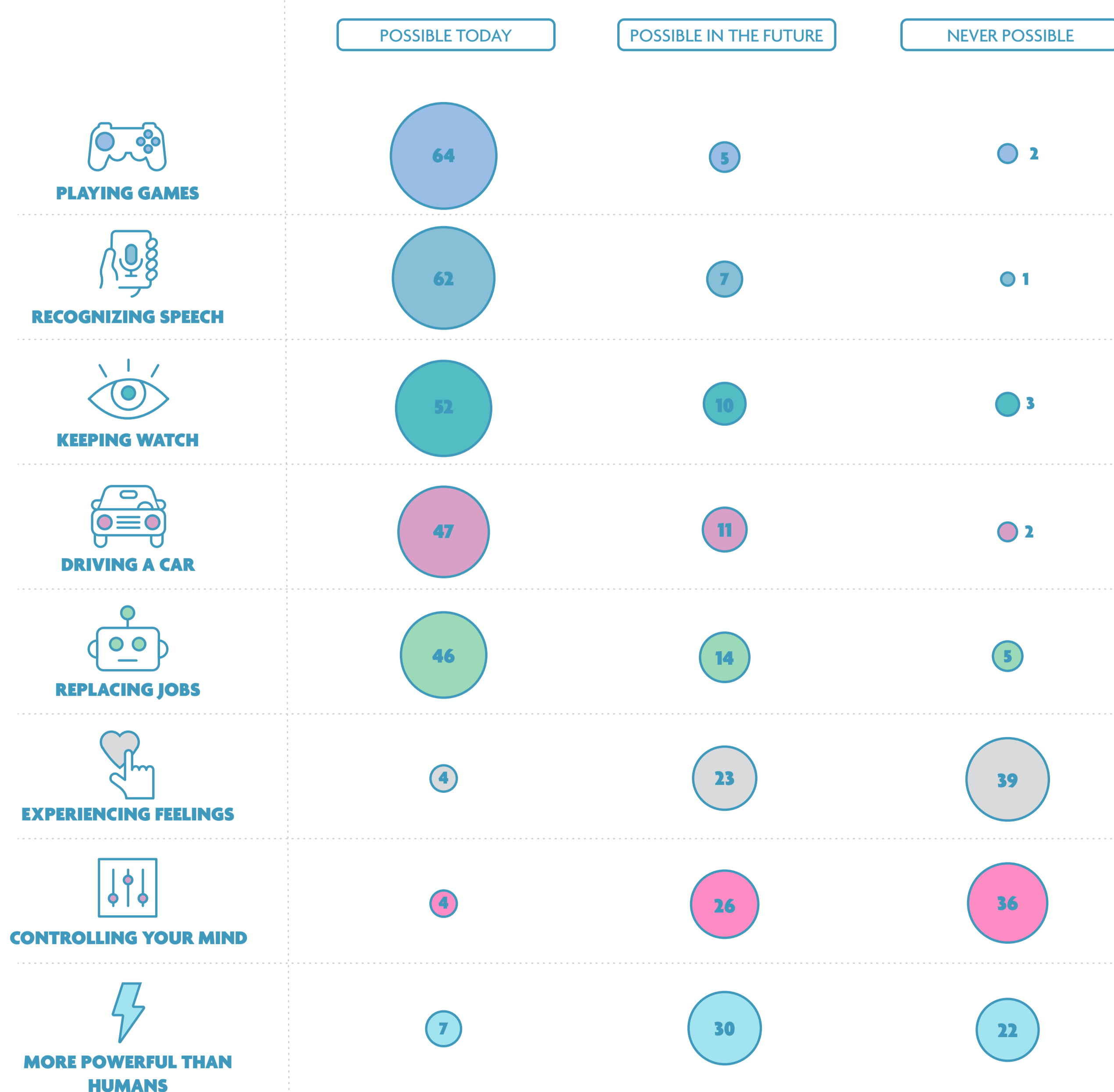


## POSSIBILITIES AND POTENTIAL

From gaming to replacing people in their job

### WHAT DO YOU THINK AI IS CAPABLE OF?

0 %



## AI APPLICATIONS PEOPLE FEEL COMFORTABLE WITH

Online shopping, personalized information and better diagnoses

